

# The Park Way Post



7<sup>th</sup> March 2025

## Could You Help Our School?

We're looking for a new school governor to join our governing body - do you know someone who might be interested? This is a fantastic opportunity for someone who would like to support our school's development and make a real difference.

Please note, this is not a parent governor role, it's a community governor, so we're looking for someone who is *not* a current parent at the school. If you know someone who might be interested or would like more information, please contact the school office.

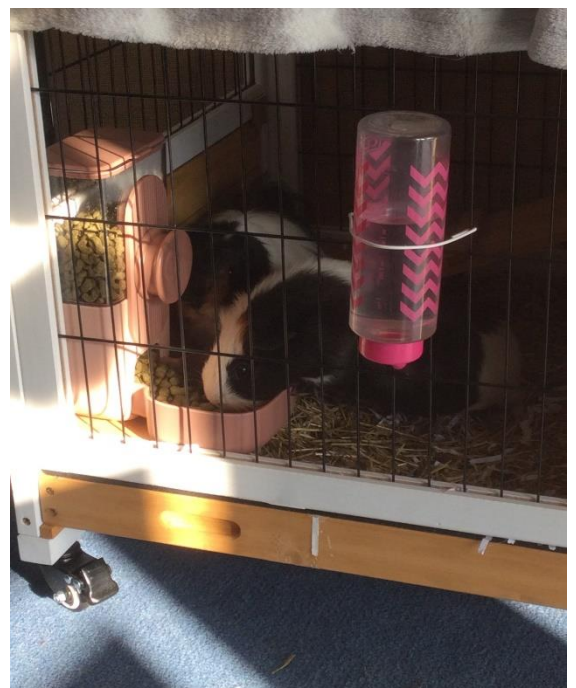
Thank you for your support!

## Apple & Pear Class

Apple and Pear classes held a naming ceremony this week. The children came up with a range of names and then voted for their favourite two.....

Apple Guinea pig is..... Stitch.

Pear Guinea pig is..... Noodle.



## Kent Adult Education

A wide range of Family Learning courses, around Kent. These courses aim to support the health and wellbeing of families, allowing them to learn together in a creative and stimulating environment, supporting them to improve their English, Maths and language skills. With this new confidence and inspiration we aim to encourage families to take their next steps towards improving family lives and chances.

Please click the link below for more information

[www.kentadulteducation.co.uk/course-areas/health-wellbeing-and-personal-development/family-learning/?utm\\_medium=email&utm\\_campaign=Family%20Learning%20050325&utm\\_content=Family%20Learning%20050325+CID\\_c2914cef43483619a35b54f203591081&utm\\_source=CampaignMonitor&utm\\_term=Browse%20all%20our%20Family%20Learning%20courses](http://www.kentadulteducation.co.uk/course-areas/health-wellbeing-and-personal-development/family-learning/?utm_medium=email&utm_campaign=Family%20Learning%20050325&utm_content=Family%20Learning%20050325+CID_c2914cef43483619a35b54f203591081&utm_source=CampaignMonitor&utm_term=Browse%20all%20our%20Family%20Learning%20courses)

## Bewl Water Residential Years 5 and 6

We have a limited number of places still available for the residential trip this year. If your child is interested or you would like any further information, please do not hesitate to contact me - Miss Churchill

## Jewellery

Please remember **NO jewellery** is to be worn in school – this includes “smart watches”. **We would like to remind you that earrings must be small studs and hoop earrings must not be worn for school**, please save them for outside of school. Children must be able to take their stud earrings out for PE themselves, we are unable to do this for them.

## Years 5 & 6

It has been noticed that a few children in years 5 and 6 are wearing make-up. This is NOT allowed and the children will be asked to wipe it off if they come in to school wearing it. Thank you - Mrs Rackley

## Parking

If you are collecting your child from After School Club please DO NOT park in front of the main gates Please find a safe place to park on the road, the entrance MUST be kept clear **AT ALL TIMES**.



If your child has any amazing out of school achievements that you are proud of, why not share them with us? Please email the office! [office@park-way.kent.sch.uk](mailto:office@park-way.kent.sch.uk)

## Attendance

**Please do not email the office - we have 100's of emails everyday and your's could get missed! Please follow the instructions below.**

If your child is unwell and unable to come to school, please call on the first day of illness and each day they are unwell

Call - **01622 753651** **CHOOSE Option 1.**

Should no-one be available please leave a message stating your child's **name, class and reason for absence.**

Or

Email - [Attendance@park-way.kent.sch.uk](mailto:Attendance@park-way.kent.sch.uk)

### Week 2 Team Point Totals

Leopards 203 (4 points)

Lions 202 (3 points)

Jaguars 193 (2 points)

Tigers 163 (1 point)

### Current Total

Leopards 4 points

Lions 3 points

Jaguars 2 points

Tigers 1 point



## PE Term 4



Monday	Tuesday	Wednesday	Thursday	Friday
Rowan (PASS) Cedar (PASS) ELM	Apple & Pear Maple	Ivy (PASS) Holly (PASS)	Cherry Walnut Oak	Cedar Cherry Rowan

## Swimming - Term 4



Please be aware that swimming forms part of the national curriculum and as such is treated like any other lesson, your child is **expected to attend every week.**

Maple - Monday

Walnut - Tuesday

Elm - Thursday

## DIARY DATES

13 <sup>th</sup> Mar	Science Museum Trip Years 5 & 6
19 <sup>th</sup> Mar	Brogdale Farm Year 3
21 <sup>st</sup> Mar	Brogdale Farm Year 4
3 <sup>rd</sup> Apr	Maidstone Museum Years 1 & 2
4 <sup>th</sup> Apr	Last Day of Term 4
22 <sup>nd</sup> Apr	First Day of Term 5



# Class Assemblies 2024-2025



Friday 6 <sup>th</sup> September 2024	No class assembly
Friday 13 <sup>th</sup> September 2024	No class assembly
Friday 20 <sup>th</sup> September 2024	Cedar
Friday 27 <sup>th</sup> September 2024	Rowan
Friday 4 <sup>th</sup> October 2024	Cherry
Friday 11 <sup>th</sup> October 2024	Elm
Friday 18 <sup>th</sup> October 2024	Walnut
Friday 25 <sup>th</sup> October 2024	Maple
Friday 1 <sup>st</sup> November 2024	HALF TERM
Friday 8 <sup>th</sup> November 2024	Oak
Friday 15 <sup>th</sup> November 2024	Holly
Friday 22 <sup>nd</sup> November 2024	Ivy
Friday 29 <sup>th</sup> November 2024	Apple & Pear
Friday 6 <sup>th</sup> December 2024	No class assembly
Friday 13 <sup>th</sup> December 2024	No class assembly
Friday 20 <sup>th</sup> December 2024	No class assembly
Friday 27 <sup>th</sup> December 2024	CHRISTMAS
Friday 3 <sup>rd</sup> January 2025	CHRISTMAS
Friday 10 <sup>th</sup> January 2025	Cedar
Friday 17 <sup>th</sup> January 2025	Rowan
Friday 24 <sup>th</sup> January 2025	Cherry
Friday 31 <sup>st</sup> January 2025	Elm
Friday 7 <sup>th</sup> February 2025	Walnut
Friday 14 <sup>th</sup> February 2025	Maple

Friday 21 <sup>st</sup> February 2025	HALF TERM
Friday 28 <sup>th</sup> February 2025	No class assembly
Friday 7 <sup>th</sup> March 2025	Oak
Friday 14 <sup>th</sup> March 2025	Holly
Friday 21 <sup>st</sup> March 2025	Ivy
Friday 28 <sup>th</sup> March 2025	Apple & Pear
Friday 4 <sup>th</sup> April 2025	Elm
Friday 11 <sup>th</sup> April 2025	EASTER
Friday 18 <sup>th</sup> April 2025	EASTER
Friday 25 <sup>th</sup> April 2025	Walnut
Friday 2 <sup>nd</sup> May 2025	Maple
Friday 9 <sup>th</sup> May 2025	No class assembly – pre-SATs
Friday 16 <sup>th</sup> May 2025	No class assembly – SATs
Friday 23 <sup>rd</sup> May 2025	Cedar
Friday 30 <sup>th</sup> May 2025	HALF TERM
Friday 6 <sup>th</sup> June 2025	Rowan
Friday 13 <sup>th</sup> June 2025	Cherry
Friday 20 <sup>th</sup> June 2025	Oak
Friday 27 <sup>th</sup> June 2025	Holly
Friday 4 <sup>th</sup> July 2025	Ivy
Friday 11 <sup>th</sup> July 2025	Apple & Pear
Friday 18 <sup>th</sup> July 2025	No class assembly
Friday 25 <sup>th</sup> July 2025	SUMMER HOLIDAY

**Kent Winter Menu 2024 2025**

**WEEK ONE**

04/11/2024  
25/11/2024  
16/12/2024  
20/01/2025  
10/02/2025  
10/03/2025  
31/03/2025

	MONDAY	TUESDAY	WEDNESDAY	THURSDAY	FRIDAY
<b>WEEK ONE</b>	NEW Tomato & Vegetable Pasta	Beef Tortilla Stack With Potato Wedges	Roast Turkey with Roast Potatoes and Gravy or Roast Quorn Fillet with Roast Potatoes and Gravy	Meatballs in Tomato Sauce with Rice & Garlic Bread	Fishfingers or Salmon Fish Fingers with Chip & Tomato Sauce
	Mexican Fajitas with Rice	Sweet Potato Curry with Rice		NEW Cheese and Broccoli Pasta with Garlic Bread	Cheese & Bean Puff With Chips & Tomato Sauce
	Green Beans & Sweetcorn	Vegetable Medley	Carrots and Cabbage	Carrots & Broccoli	Baked Beans & Peas
	Blackberry and Apple Crumble with Custard	Melting Moment Biscuit With Peaches	Berry Mousse	Chocolate Drizzle Cake with Chocolate Sauce	Oaty Cookie
<b>WEEK TWO</b>	NEW Cheese and Tomato Pasta with New Potatoes Or Chinese Vegetable Noodles	NEW Chicken Pasta Bake with Garlic Bread	Sausages With Roast Potatoes & Gravy	Chicken Tikka Masala with Rice	Fishfingers with Chips & Tomato Sauce
	Peas & Sweetcorn	Veggie Cottage Pie	Veggie Sausage With Roast Potatoes & Gravy	Hominy Pie With New Potatoes	Cheese and Pepper Omelette with Chips & Tomato Sauce
	Chocolate Orange Cookie	Green Beans & Carrots	Vegetable Medley	Sweetcorn & Broccoli	Baked Beans & Peas
		Marble Sponge With Custard	Jelly With Mandarins	Peach Cake With Cream	Vanilla Shortbread
<b>WEEK THREE</b>	Macaroni Cheese with Homemade Bread	NEW Mild Caribbean Chicken with Rice and Peas	Roast Chicken with Stuffing, Roast Potatoes and Gravy	Spaghetti Bolognese With Garlic Bread	Breaded Fish with Chips & Tomato Sauce
	NEW Veggie Baked Bean Hot Pot	Caribbean Pepper & Cheese Whirl with New Potatoes	Vegetable Wellington with Stuffing, Roast Potatoes and Gravy	NEW Mild Mexican Veggie Chili with Rice.	Veggie Sausage, Chips & Tomato Sauce
	Peas & Carrots	Sweetcorn & Green Beans	Vegetable Medley	Broccoli & Sweetcorn	Baked Beans & Peas
	Chocolate and Beetroot Brownie	Sticky Toffee Apple Crumble with Custard	Rice Pudding With Berries	Vanilla Shortbread with Peaches	Chocolate Cookie

**MENU KEY**

🌿 Added Plant Power   
 🍪 Wholemeal   
 🌱 Vegan

**Available Daily:** Jacket Potatoes With Filling - Fresh Bread - Salad Selection - Fresh Fruit and Yoghurt

**ALLERGY INFORMATION:**  
If you would like to know about particular allergens in foods please ask a member of the catering team for information. If your child has a school lunch and has a food allergy or intolerance you will be asked to complete a form to ensure we have the necessary information to cater for your child. We use a large variety of ingredients in the preparation of our meals and due to the nature of our kitchens it is not possible to completely remove the risk of cross contamination.



## Term Dates 2024/2025

<b>TERM 1</b>	
Monday 2 <sup>nd</sup> September	Staff Development Day
Tuesday 3 <sup>rd</sup> September	First Day of Term 1
Friday 25 <sup>th</sup> October	Last Day of Term 1

<b>OCTOBER HALF TERM</b>	
Saturday 26 <sup>th</sup> October – Sunday 3 <sup>rd</sup> November	Holiday – No School

<b>TERM 2</b>	
Monday 4 <sup>th</sup> November	First Day of Term 2
Friday 20 <sup>th</sup> December	Last Day of Term 2

<b>CHRISTMAS HOLIDAY</b>	
Saturday 21 <sup>st</sup> December – Sunday 5 <sup>th</sup> January	Holiday – No School

<b>TERM 3</b>	
Monday 6 <sup>th</sup> January	First Day of Term 3
Friday 14 <sup>th</sup> February	Last Day of Term 3

<b>FEBRUARY HALF TERM</b>	
Saturday 15 <sup>th</sup> February – Sunday 23 <sup>rd</sup> February	Holiday – No School

<b>TERM 4</b>	
Monday 24 <sup>th</sup> February	First Day of Term 4
Friday 28 <sup>th</sup> February	Staff Development Day
Friday 4 <sup>th</sup> April	Last Day of Term 4

<b>EASTER HOLIDAY</b>	
Saturday 5 <sup>th</sup> April – Sunday 20 <sup>th</sup> April	Holiday – No School
Monday 21 <sup>st</sup> April	Bank Holiday – No School

<b>TERM 5</b>	
Tuesday 22 <sup>nd</sup> April	First Day of Term 5
Monday 5 <sup>th</sup> May	Bank Holiday – No School
Friday 23 <sup>rd</sup> May	Last Day of Term 5

<b>MAY HALF TERM</b>	
Saturday 24 <sup>th</sup> May – Sunday 1 <sup>st</sup> June	Holiday – No School

<b>TERM 6</b>	
Monday 2 <sup>nd</sup> June	Staff Development Day
Tuesday 3 <sup>rd</sup> June	First Day of Term 6
Friday 18 <sup>th</sup> July	Last Day of Term 6
Monday 21 <sup>st</sup> July	Staff Development Day
Tuesday 22 <sup>nd</sup> July	Staff Development Day



**Allington Castle  
Archers**



# Open Day

**Saturday 22nd March 10 am to 4 pm**

**West Borough Primary School, Greenway, Maidstone ME16 8TL**



Come and Have-a-Go, **all FREE**, fully supervised by Coaches, Instructors and experienced club members.

Children—Shoot at our Wooden Castle Knights (blunt arrows)

Adults can try; Target and Field shooting at 15 to 20 yards and Clout shooting at 100 yards.

Demonstrations of shooting at 50 and 70 meters, as in the Olympics.

Equipment Displays and Information. Refreshments (chargeable)

**[www.castlearchers.org.uk](http://www.castlearchers.org.uk)**

