

# Welcome to Park Way Primary School!





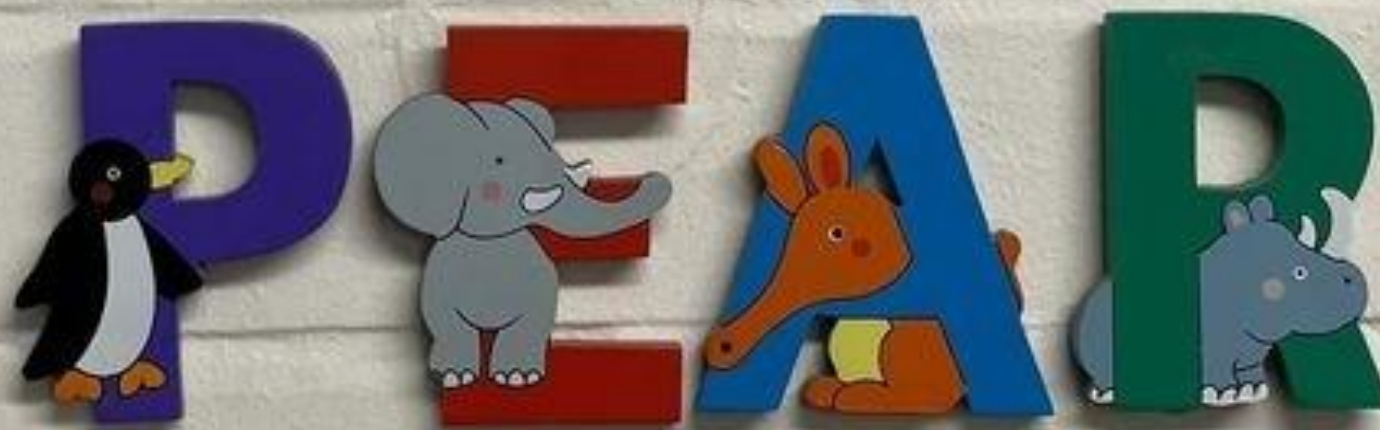
**The first two weeks of school will be part time**

w/c 2 <sup>nd</sup> Sept	08:45 - 12:00 (No Lunch)
w/c 8 <sup>th</sup> Sept	08:45 - 13:30 (Lunch)
w/c 15 <sup>th</sup> Sept	08:45 - 15:15 (Full Time)





We have two Reception Classes ...





# Apple Class



**Mrs Trusler**  
Class Teacher





# Pear Class



**Mrs Green**  
Class Teacher



# Our Early years teaching assistants



**Miss Mayley**  
Teaching Assistant



**Mrs Healey**  
Teaching Assistant



**Mrs Bramwell**  
Teaching Assistant



# What does the outdoor learning area look like?





### **Jewellery**

The only jewellery permitted in school is a pair of plain stud earrings—no hoops! Your child must be able to remove these themselves for swimming and PE or not wear them on PE days.

### **Lost Property**

If something does get lost, please double check with the class teacher and then pop into the office to check the lost property box.

The school does not accept any responsibility for loss or damage of personal property of the children.

### **SCOpay**

Our parent app is called SCOpay. We use this for Trips & Events, Clubs and Consent Forms. You will receive details regarding set up when your child starts full time with us. It is important that you download the App and ensure notifications are turned on so that you don't miss out on important information.



### **Medicines**

Please do not send any medication into school with your child. This includes lozenges and cough sweets.

If your child has been prescribed any medication that must be given in school (such as an inhaler) or to be given **4 times a day**, please bring it into the school office and complete a consent form.

### **Attendance**

Once your child starts with us we expect them to attend school every day and on time unless they are too unwell to do so.

If you take your child out of school and their leave is not approved then it will be recorded as unauthorised and you may receive a fine for their non—attendance.



# What will I need to bring to school?



## Book Bag

You will be given these when you start



## P.E Bag & P.E Kit

You will be given P.E Coloured T—Shirt & Water bottle when you start

## Reading Record, Reading Book & Sound Blending Book

You will be given these when you start.

Reading for pleasure book to share with your child.

Sound blending book will be given out after Term 1.



## Lunch Bag

If you are not having a school dinner





# What do I wear to school?

## Tops



White Polo Top



Blue Sweatshirt



Blue Cardigan

## Dresses



Grey Pinafore



Blue Summer Dress

## Bottoms



Grey Trousers



Grey Skirt



Grey Tights



Grey Socks



White Socks

## Shoes



Black School Shoes

## Suppliers

Our chosen supplier of branded uniform items is Pages Schoolwear, you can find them in Maidstone Town centre or order online. However, there is no expectation that school uniform is branded. Some shops that stock unbranded items include Sainsbury's, Asda, Morrisons and M&S.



# What PE Kit do I bring to school?

## Tops



PE Top in house colour

Lions Leopards Tigers Jaguars



Black Sweatshirt



Black Shorts



Black Joggers



Black Leggings

## Shoes



Plimssoles



Black Trainers

Your first PE top will be given to you on your first day with us, you will also get a water bottle which will stay in school.



# What else do I need to bring to school?

We enjoy lots of our learning time  
outside at school  
in all types of weathers and  
want the children to stay warm and dry.



A pair of Wellies



Two piece waterproof suit

# How do I get to my Classroom?

Come in through the school gates and follow the path to the car park



Walk through the car park and past the office



Follow the path to Apple & Pear Class - remember that school starts at 8:45 and finishes at 15:15!





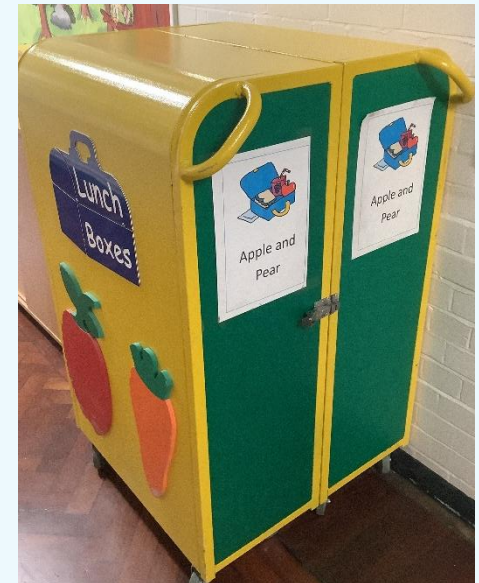
# Where will I keep my things during the day?



Everyone has a peg in their classroom with their name on. You can hang your coat.



Your book bag goes in your tray in the classroom



If you bring a packed lunch they are kept on the Apple & Pear lunch box trolley



# Where do I go at playtime?



At playtime and lunchtime reception, years 1 & 2 go out to their playground. Years 3,4,5 & 6 have a separate playground.



# Where will I eat my lunch?



Apple & Pear Class eat their lunch in the Main Hall with the other children

We are a nut free school so please bear this in mind when making packed lunches. We also promote healthy eating, so please, **no chocolate bars or sweets!**

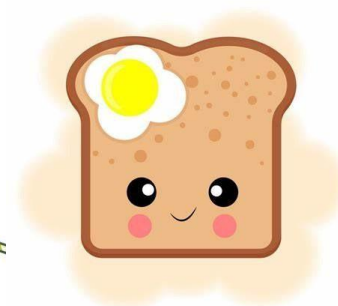
Hot school meals are available daily, children have a choice of a main meal, vegetarian option or a jacket potato every day. Our chosen provider is Caterlink, please see their menu.

## **Important Reminder :**

Please ensure you have made us aware of any allergies or dietary requirements!

PARK WAY PRIMARY SCHOOL : SUPPORTING OUR WORKING FAMILIES

# BREAKFAST CLUB



Starting the school day right

8:00 am – 8:45 am

BOOK AND PAY FOR SESSIONS ONLINE VIA SCOPAY

Login details will be provided when your child starts with us

We are fortunate to have no limit on spaces in our Breakfast Club

{ 8:00 – 8:45 Breakfast & Activities : £2.00 } { 8:30 - 8:45 Breakfast Only : £0.60 }



# PARK WAY PRIMARY SCHOOL : SUPPORTING OUR WORKING FAMILIES

## AFTER SCHOOL CLUB



Fun activities available every school day  
3:15 pm - 5:30 pm

### BOOK AND PAY FOR SESSIONS ONLINE VIA SCOPAY

Login details will be provided when your child starts with us

Spaces are limited and given on a first come first served basis

{3:15 – 4:15 Without Food : £4.00 } { 3:15 – 4:15 With Food : £5.00 } { 3:15 – 5:30 With Food : £8.00 }

# People you will see around school



**Miss Hill**  
Deputy Head Teacher & SENCO



**Mrs Dhanecha**  
Head Teacher



**Mr Fishwick**  
Site Manager



**Mr Witherington**  
ICT Technician



**Miss Hayes**  
SEN Assistant



**Miss Dann**  
Resource Manager



# The Umbrella Room



The Umbrella Room is where you will find Mrs Abrahams, our Attendance & Welfare Officer

She is here to support you with any worries or concerns you may have inside and outside of school.

If your child is absent from school, you must call the main number, dial option 1 and let Mrs Abrahams know.



# Our school animals

## Maggie

**We are very lucky to have a school dog at Park Way.**

Mrs Abrahams looks after our school dog in the Umbrella room and she spends time with our children around the school.

She enjoys cuddles and loves listening to our children read.

**Park Way Primary School** 

*Introducing...* **Maggie our school dog** 

Here to help with:

- Anxiety reduction
- Desensitisation and problem solving
- Communication and social anxiety
- Stress and coping strategies
- Attachment and relationship building
- Social interaction and relationships
- Attention and behaviour

Did you know a school dog can...

- Improve academic achievement
- Increase literacy skills
- Calm behaviours
- Increase social skills and self-esteem
- Increase confidence
- Teach responsibility and respect to all life



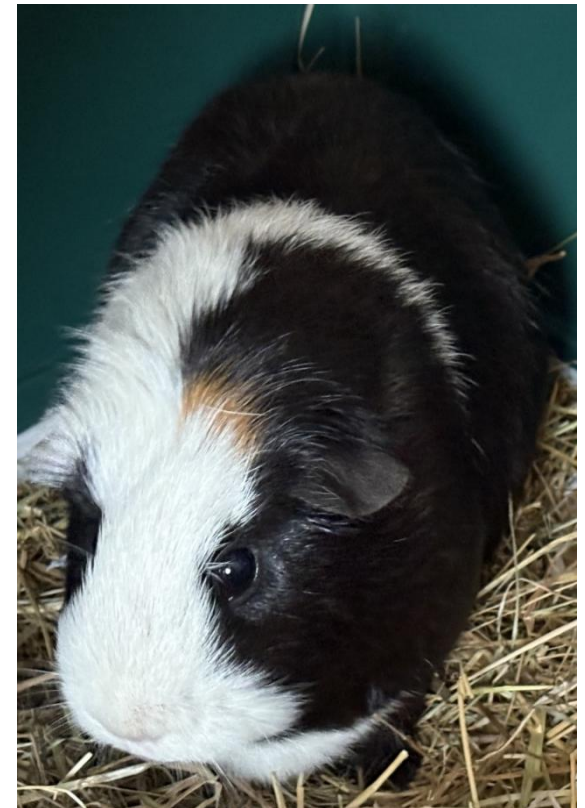


### **Stitch and Noodles**

We are very lucky to have two Guinea pigs in Reception class. They are around a year old and love being stroked.

They live in Apple and Pear class so the children will see them daily.

In the summer months they come outside into our outside area and the children will have the opportunity to be a pet monitor and look after them by doing daily jobs such as feeding them.



# The Office

If you are feeling unwell, forget anything or need first aid – this is where you will come!

If you have any concerns or questions we are always happy to help!





# Other places in school



The Reception Area



The Corridors



The Library



The Field



The Hall



The Bike Shelter

We look forward to seeing you in  
September!

